

DF35 Series



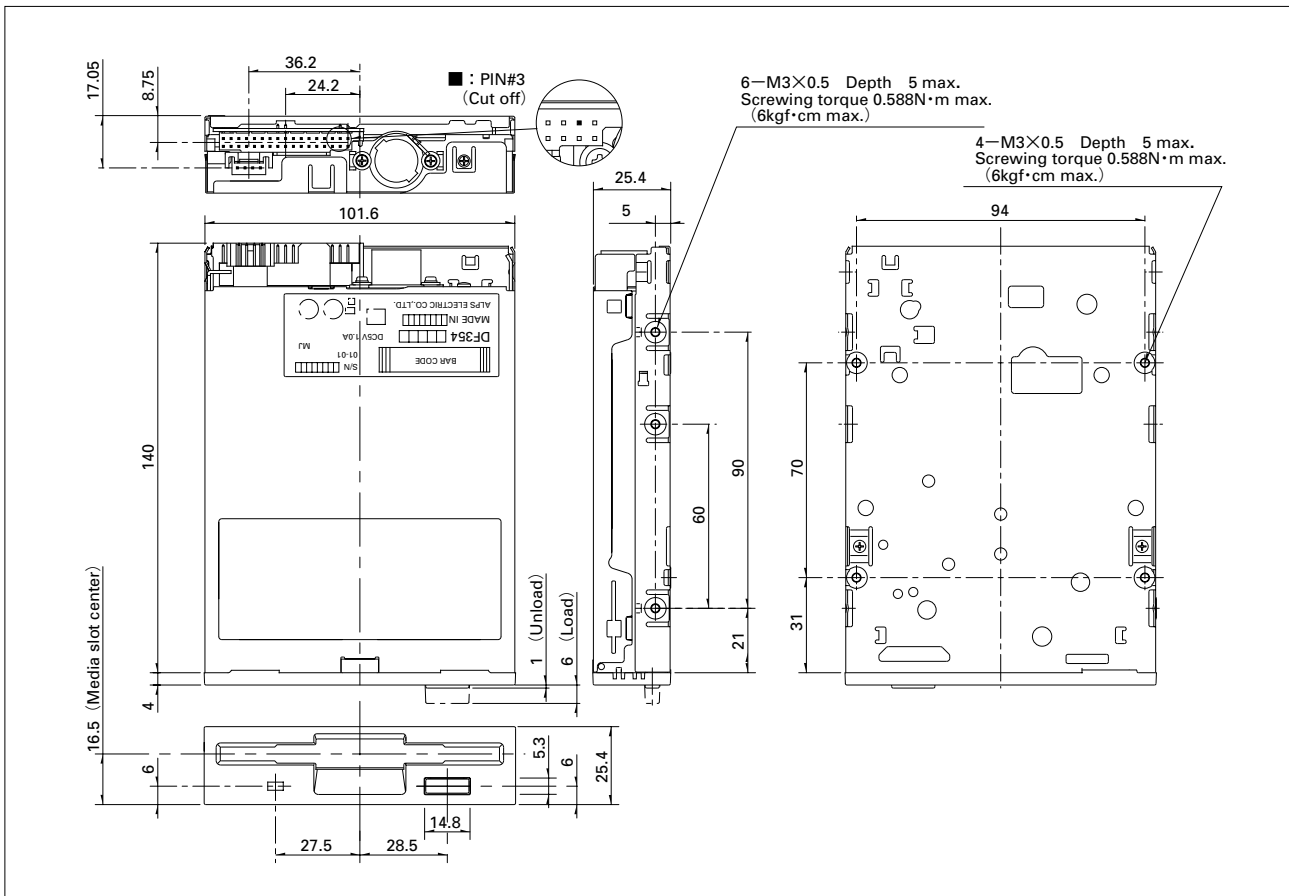
High reliability floppy disk drive by the employment of a direct-drive motor.

Features

- 25.4mm (1-inch) height body and 3.5-inch FDD standard size, facilitating easy system design.
- Three recording capacity mode (2MB, 1.6MB and 1MB) is available.
- High reliability attained by the employment of a direct-drive motor (Mean Time Between Failures (MTBF) of 80,000POH).
- Driven by a single 5V power supply, with low power consumption (1.1W (typ.) during read / write operation).
- Semi-sealed construction has achieved high performance by protecting against dust and anti-electromagnetic noise.
- FCC Class B satisfy.
- The followings are available.
 1. With bezel (Standard) or without bezel (with shutter).
 2. Color choice of bezel, shutter and eject button
Ivory, Black (Standard).
Gray, the others (Custom Color).
 3. Color choice of LED (Green (Standard), Red, Amber).

Outline dimensions

Unit : mm



Specifications

Items	Model	
	DF354H	DF354N
Storage capacity (Unformatted)	2.0/1.0 MB	2.0/1.6/1.0 MB
Data transfer rate	500K/250K bps	500K/500K/250K bps
Recording density	686/343 bpmm (17434/8717 bpi)	686/558/343 bpmm (17434/14184/8717 bpi)
Track density	5.33 tpmm (135 tpi)	
Number of tracks	160	160/154/160
Rotation speed	300 min ⁻¹ (300 rpm)	300/360/300 min ⁻¹ (300/360/300 rpm)
Track to track seek time	3 ms	
Settling time	15 ms	
Motor start time	500 ms	
Outline dimensions (h) x (w) x (d)	25.4×101.6×140 mm (1×4×5.51 in.)	
Weight	420g (0.92 lb.)	

Environmental and Physical Specifications

Power	Supply voltage	5 V (±10%)	
	Consumption	W/R	1.1 W (typ.)
		Standby	0.05 W max.
Environmental condition	Temperature (operating / non-operating)	5 to 50°C (41 to 122 °F) / -40 to 60°C (-40 to 140 °F)	
	Humidity (operating / non-operating)	8 to 80 %RH / 5 to 90 %RH	
	Wet bulb max.	29.4°C (85.0 °F)	
Vibration resistance	Operating	7.16 m/s ² (0.73 G) 17 to 200Hz, 3.24 m/s ² (0.33 G) 200 to 500Hz	
	Non-operating	19.61 m/s ² (2 G) 10 to 200Hz	
Shock resistance	Operating	49 m/s ² (5 G) 11ms half sine	
	Non-operating	686 m/s ² (70 G) 11ms half sine	

Reliability

MTBF	80,000 POH	
MTTR	30minutes	
Error rate	Soft	1per10 ⁹ bits
	Hard	1per10 ¹² bits
	Seek	1per10 ⁶ seeks

Safety Standards

Safety standards	UL, CSA and TÜV approved
------------------	--------------------------

Note This product is manufactured in Malaysia and China.

CAUTIONS

- Unless specifically indicated otherwise, products in this catalog have been designed and manufactured for use in ordinary electronic equipment and devices, such as AV equipment, electric home appliances, office machines, and communications equipment. So if these products are planned for equipment that requires a high degree of safety and reliability, especially those apparatuses like medical equipment, aviation and aircraft equipment, space equipment, and burglar alarm equipment, the equipment manufacturers should assure equipment safety by providing protection circuits and redundant circuitry and should fully check the suitability of such products for the intended equipment.
- Specification indicated in this catalog is outline only. When employing the product, we recommend use of an officially authorized specification for supply contract.
- The external appearance, performances, and other properties of the product may be changed for improvement without prior notice. The product introduced in this catalogue may discontinue being produced without prior notice.
- Please note that the colors of products shown in this catalog may be a little different from those of the actual products.
- Names for products and companies and titles of specifications indicated in this catalogue are mostly trademarks or registered trademarks of their respective owners.
- Please contact us for any enquiries and queries on our products and their uses.
- This catalog is valid till the end of December 2007.

ALPS ELECTRIC CO., LTD.

For more information please contact : Sales or Products Information Center.

PHONE : +81 (3) 5499 -8154(DIRECT)

Product information site <http://www3.alps.com/e/>



This catalog is printed with soy ink.