

Slide Potentiometers for Fader Control of Mixers Low-profile Master Type (Slim Type)

RS□□N□□S Series



The thinnest possible body contributes to reduce size, height and weight of the set.

- Rotary Potentiometers
- Slide Potentiometers**
- Multi Control Devices
- Sensors



Features

- Soft, comfortable feel and improved operability.
- Compact and space-saving design enables smaller and lighter set design.
- Maximum attenuation of over 110dB. (Compatible to total resistance value of over 10KΩ)

Applications

- For fader control in mixing consoles

Typical Specifications

Items	Specifications
Total resistance tolerance	±20%
Maximum operating voltage	200V AC, 10V DC (RS60N Series) 500V AC, 10V DC (RSA0N Series)
Operating force	0.05 to 0.8N
Operating life	30,000cycles
Operating temperature range	-10°C to +60°C

Recommended Products List

Number of resistor elements	Travel (mm)	Lever type	Length of lever (mm)	Total resistance (kΩ)	Resistance taper	Terminal style	Minimum packing unit (pcs.)	Products No.	Drawing No.
Single-unit	60	4	20	10	1B	For PC board	100	RS60N11S4003	1
	100	9-T (T-Bar)	8.2					RSA0N11S9002	2

Note

Products other than those listed in above recommended products are also available. Please contact us for details.

Dimensions

Unit:mm

No.	Style	PC board mounting hole dimensions
1		

Refer to P.143 for product varieties.
Refer to P.143 for details of lever types.
Refer to P.154 for product specifications.

Dimensions

Unit:mm

No.	Style	PC board mounting hole dimensions
2		

Product Varieties

In addition to the recommended products, the following specifications can also be accommodated.

Total Resistance Variety

Total resistance (kΩ)	10	50	100	250
-----------------------	----	----	-----	-----

Resistance taper

Resistance taper	15A	1B	10A
------------------	-----	----	-----

Lever Types

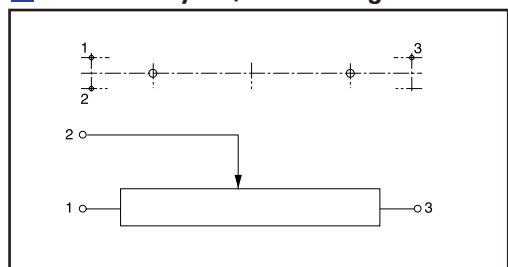
Unit:mm

Configuration code	1	4	9-T (T-Bar)
Dimensions			

Corresponding Specifaion

Dust cover	Available
------------	-----------

Terminal layout/Circuit diagram



Notes

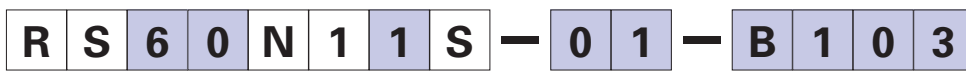
1. marked are specifications recommended by ALPS.
2. Products other than those listed in the above list are also available. Please contact us for details.

Refer to P.144 for resistance taper.

Orders other than recommended products

When ordering product varieties that are not listed in the Recommended Product list, please specify by referring to the below example.

Sample Part Number



Travel

60	60mm
A0	100mm

Number of resistor elements

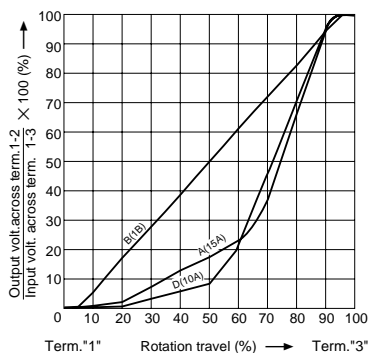
Single-unit	1
-------------	---

Type of operation unit

Code	Configuration code
01	1
04	4
9T	9-T (T-Bar)

Resistance taper

Code	Resistance taper
A	15A
B	1B
D	10A



Total resistance

Code	Total resistance (kΩ)	Code	Total resistance (kΩ)
103	10	104	100
503	50	254	250

- Rotary Potentiometers
- Slide Potentiometers
- Multi Control Devices
- Sensors

- General-use
- Mixer

Products Specifications

Item	Master type	Low-profile master type	Motor-driven master type
Model	RS□□K□□	RS□□N1 RS□□N11S RS6011□Y	RS□□N1□M RSA0K1□V

Mechanical Performance

Operating temperature range	-10 °C to +60°C		
Operating force	Standard : 0.1 to 0.6N CP Single-unit : 0.05 to 0.35N CP Dual-unit : 0.1 to 0.5N	RS□□N1□ Single-unit : 0.05 to 0.8N Dual-unit : 0.05 to 0.9N RS6011□Y 0.1 to 2.0N RS□□N11S 0.05 to 0.8N	RS□□N1□M 0.3 to 1.3N RSA0K1□V, Single-unit : 0.15 to 0.65N Dual-unit : 0.25 to 0.9N
Stopper strength	100N		
Lever push-pull strength	100N	50N	
Lever wobble (mm) ※Both side	$\frac{2(2 \times L)}{25}$		
Lever deviation	0.5mm max. (One side)		
Solder heat resistance	Manual soldering	350°C max. 3s max.	
	Dip soldering	260°C max. 5s max. RS□□N1□M (Lead type) , RSA0K1□V : not available	

Electrical Performance

Total resistance (kΩ)	10, 50, 100, 250	RS□□N1 : 10, 50, 100, 250 RS□□N11S : 10, 50, 100, 250 RS6011□Y : 10, 20, 50	RS□□N1□M : 10, 50, 100, 250 RSA0K1□V : 10
Total resistance tolerance	±20%		
Resistance taper	15A, 1B, 15C	RS□□N1 : 15A, 1B, 10A RS□□N1□S : 15A, 1B, 10A RS6011□Y : 15A, 1B, 10A	Single-unit : 1B Dual-unit : Servo 1B Audio 15A, 1B, 10A

Endurance

Sliding life	Standard : 100,000cycles C P : 300,000cycles	30,000cycles
--------------	---	--------------

Environmental Test

Cold	-30±2°C for 96h
Dry heat	70±2°C for 240h
Damp heat	40±2°C, 90 to 95%RH for 96h

Notes

- "L" in the "Lever Wobble" column of the above table indicates the length of lever.
- Products other than those listed in the above list are also available. Please contact us for details.

Rotary Potentiometers

Slide Potentiometers

Multi Control Devices

Sensors

General-use

Mixer